



10 Gough Square

London, EC4A 3DE

A Modern Workspace in the Heart of Historic London - Refurbished CAT A 4th and 5th floors available.

1,145 to 2,614 sq ft
(106.37 to 242.85 sq m)

- New LG7 lighting
- Exposed ceiling
- Abundance of natural light
- Air-conditioning / Central heating
- Attractive courtyard
- Excellent transport links with close proximity to City Thameslink, Blackfriars, Temple, and Chancery Lane stations.

10 Gough Square, London, EC4A 3DE

Summary

Available Size	1,145 to 2,614 sq ft
Rent	£55 per sq ft
Rates Payable	£17.14 per sq ft 2023
Service Charge	£14 per sq ft Estimate
EPC Rating	Upon enquiry

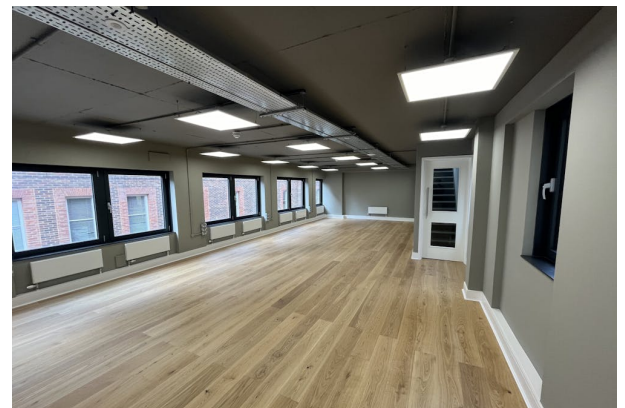
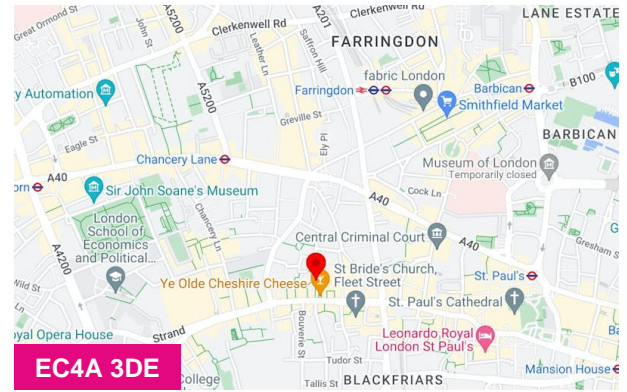
Accommodation

The accommodation comprises the following areas:

Name	sq ft	sq m	Availability
5th	1,145	106.37	Available
4th	1,549	143.91	Available
Total	2,694	250.28	

Location

Nestled in the prestigious Midtown district, just north of the vibrant Fleet Street, 10 Gough Square offers a harmonious blend of modern amenities and historic charm. This refurbished office building, constructed in the early 1980s, stands proudly at the south-east corner of the square, boasting a tranquil courtyard that overlooks the iconic Ye Olde Cheshire Cheese pub.



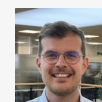
Viewing & Further Information



Fergus Findlay

07796510205

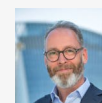
Fergus.findlay@bbgreal.com



Fred Pope

07886170666

fred.pope@bbgreal.com



Tom Boggis

02037131950 | 07795 070 676

tom.boggis@bbgreal.com